

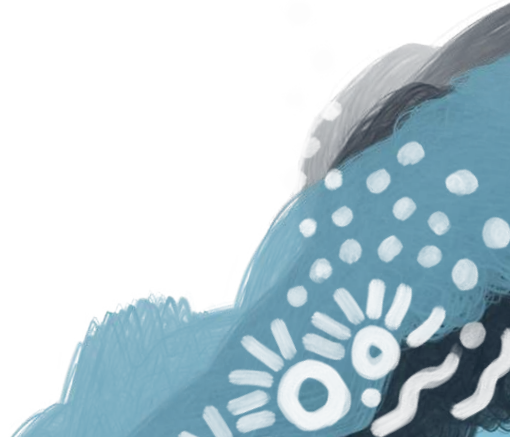


Yarning energy

- common terms and what they mean



AGL is working with First Nations Foundation to make it easier for indigenous people to understand energy.



ENERGY BILL TERMS

An energy bill is a document that is sent to you by your energy provider. It tells you the cost of your electricity or gas usage over a certain amount of time. Understanding your energy bill can help you manage your usage and cost involved and help you to ensure you are getting the best value for money.

COMMON TERMS USED ON ENERGY BILLS & WHAT THEY MEAN:

| | |
|----------------------------|---|
| Energy Usage | The amount of energy that you have used during the billing cycle. |
| Supply Address | The address of the property that your energy provider is billing you for. |
| Billing Cycle | The time period that you are being billed for (for example Jan - March). |
| Amount Due | How much you owe on your energy bill. |
| Account Number | This is your unique number that identifies your energy account, you should quote this number when you contact your energy provider with any questions about your account. You'll find it on your energy bill and most other letters from your provider. |
| Reference Number | This number is specific to your gas or electricity bill and when talking about a specific bill you can quote this reference number. |
| Peak/Off-Peak Rates | Peak rates apply during high-demand times when energy costs more and off-peak rates apply during the less busy times. |
| Supply Charge | A daily fee for keeping the energy supply connected to your house. |
| NMI | Every connection to the national electricity network is given its own identification number - the National Meter Identifier (NMI). You'll need this number if you change your electricity retailer. |
| MIRN | If you live in Victoria, Queensland, South Australia or Western Australia, your gas meter is linked to a Meter Identification Reference Number, a unique number assigned to your address. |
| DPI | If you live in New South Wales, your gas meter is linked to a Delivery Point Identifier, a unique number assigned to your address. |



AGL is working with First Nations Foundation to make it easier for indigenous people to understand energy.

**CHECK OUT OUR OTHER
YARNING ENERGY GUIDES**

energy saving tips
bill saving tips